

SIGNAGE KEY	
①	SIDEWALK CLOSED TYPE III BARRICADE (SEE DETAIL THIS SHEET)
②	SIDEWALK CLOSED AHEAD CROSS HERE (SEE DETAIL THIS SHEET)

DEMOLITION KEY	
①	REMOVE EXISTING 24" PECAN TREE AND ROOT SYSTEM (SEE LANDSCAPING)
②	REMOVE EXISTING Crape MYRTLE TREES AND ROOT SYSTEM (SEE NOTE 7)
③	REMOVE EXISTING DRAINPIPES AS REQUIRED TO TIE IN WITH NEW CURB INLET
④	EXISTING 36" LIVE OAK TREE TO REMAIN (SEE LANDSCAPING)
⑤	FULL DEPTH SAWCUT (LENGTH NOTED ON CALLOUTS)
⑥	EXISTING RAISED CONCRETE SIDEWALK TO REMAIN
⑦	REMOVE EXISTING CONCRETE SIDEWALK
⑧	EXISTING PYLON SIGN TO REMAIN
⑨	REMOVE EXISTING BARRIER CURB
⑩	REMOVE EXISTING CONCRETE PARKING LOT
⑪	REMOVE EXISTING OVERHEAD CANOPY, CONCRETE ISLAND AND HANDICAP RAMP
⑫	REMOVE EXISTING SERVICE POLE
⑬	EXISTING TELEPHONE PEDESTAL TO BE REMOVED (SEE ELECTRICAL)
⑭	EXISTING OVERHEAD TELEPHONE CABLE TO BE REMOVED BY AT&T
⑮	DISCONNECT EXISTING OVERHEAD ELECTRIC (SEE ELECTRICAL)
⑯	DISCONNECT EXISTING UNDERGROUND ELECTRIC (SEE ELECTRICAL)
⑰	REMOVE EXISTING POWER POLE (SEE ELECTRICAL)
⑱	REMOVE EXISTING 8' CHAIN LINK FENCE
⑲	REMOVE EXISTING CMU BUILDING AND FOUNDATION (SEE ELECTRICAL)
⑳	REMOVE EXISTING GAS SERVICE LINE (COORDINATE WITH THE CITY GAS DEPARTMENT)
㉑	REMOVE EXISTING GAS VALVE (COORDINATE WITH THE CITY GAS DEPARTMENT)
㉒	REMOVE EXISTING GAS METER (COORDINATE WITH THE CITY GAS DEPARTMENT)
㉓	REMOVE AND REPLACE EXISTING ASPHALT STREET (AS REQUIRED)
㉔	REMOVE AND REPLACE EXISTING CONCRETE SIDEWALK (AS REQUIRED)
㉕	REMOVE AND REPLACE EXISTING CONCRETE SIDEWALK AND GUTTER (AS REQUIRED)
㉖	REMOVE EXISTING TREE STUMP
㉗	EXISTING OVERHEAD TELEPHONE CABLE TO REMAIN (SEE ELECTRICAL)
㉘	TEMPORARY CONSTRUCTION FENCING
㉙	REMOVE EXISTING CHILLER (SEE ELECTRICAL)
㉚	OVERHEAD ELECTRIC TO BE RELOCATED UNDERGROUND (SEE NOTE 8)
㉛	REMOVE EXISTING AC CONDENSER UNIT (SEE ELECTRICAL)

CALL "LOUISIANA ONE-CALL"  
PRIOR TO DIGGING  
DIAL 811

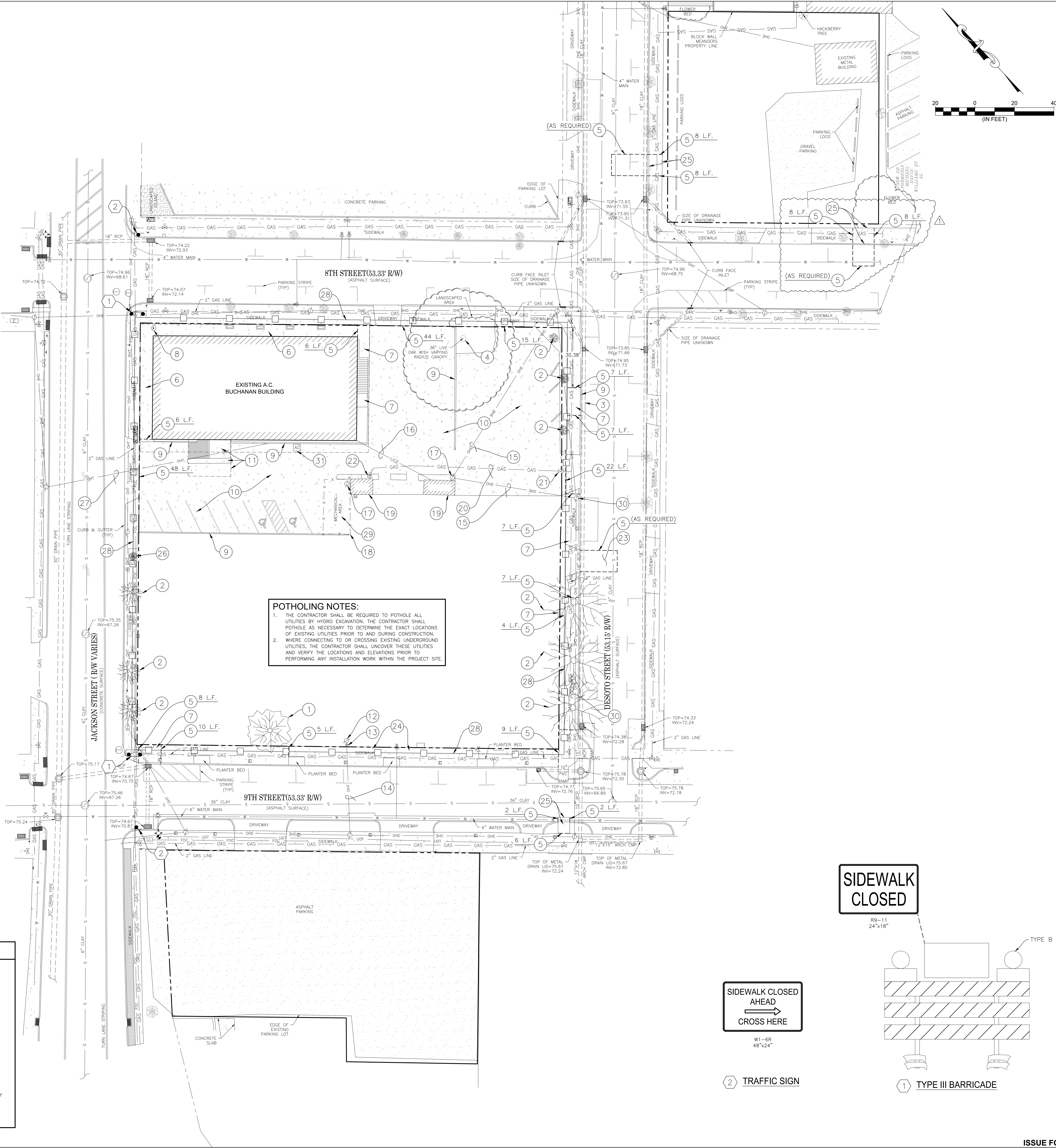
NOTES:

- NO ATTEMPT HAS BEEN MADE BY MONCEAUX-BULLER & ASSOCIATES TO VERIFY TITLE, ACTUAL LEGAL OWNERSHIP, SERVITUDES, EASEMENTS, RIGHTS-OF-WAY OR OTHER BURDENS ON THE PROPERTY, OTHER THAN THAT FURNISHED BY THE CLIENT OR HIS REPRESENTATIVES.
- THE CONTRACTOR SHALL BE RESPONSIBLE FOR POTHOLING AND DETERMINING THE EXACT LOCATION, DEPTH, SIZE AND MATERIAL OF ALL UNDERGROUND UTILITIES AND STRUCTURES AND SHALL BE LIABLE FOR ANY DAMAGE CAUSED BY FAILURE TO COMPLY WITH THESE INSTRUCTIONS.
- ALL ITEMS RESULTING FROM DEMOLITION SHALL BECOME THE PROPERTY OF THE CONTRACTOR AND DISPOSED OF AT AN APPROVED OFF-SITE LOCATION, UNLESS OTHERWISE STATED BY THE OWNER.
- EXCESS EXCAVATED SOIL SHALL BE HAULED OFF-SITE TO AN APPROVED LOCATION.
- CONTRACTOR IS RESPONSIBLE FOR THE REPAIR OF ANY ITEMS, INCLUDING SIDEWALKS AND PAVEMENT, THAT IS DAMAGED AS A RESULT OF THE WORK SHOWN HEREON.
- THE CONTRACTOR SHALL INSTALL AND MAINTAIN ADEQUATE CONSTRUCTION SIGNING AND BARRICADES WHERE REQUIRED IN ACCORDANCE WITH THE MANUAL OF UNIFORM TRAFFIC CONTROL DEVICES.
- CONTRACTOR SHALL COORDINATE WITH THE CITY OF ALEXANDRIA ENGINEERING DEPARTMENT ON LIMITS OF TREE REMOVAL.
- CONTRACTOR SHALL COORDINATE WITH THE CITY OF ALEXANDRIA ELECTRICAL AND ENGINEERING DEPARTMENT ON ELECTRICAL WORK BEING PERFORMED ALONG DESOTO STREET.

UTILITY DESIGNATIONS:			
<b>WATER:</b> CITY OF ALEXANDRIA 2021 INDUSTRIAL PARK RD. ALEXANDRIA, LA 71303 318-441-6213		<b>SANITARY SEWER:</b> CITY OF ALEXANDRIA 1212 HUDSON BOULEVARD ALEXANDRIA, LA 71309 318-441-6240	
<b>ELECTRIC:</b> CITY OF ALEXANDRIA P.O. BOX 71 ALEXANDRIA, LA 71309 318-473-1301		<b>TELEPHONE/FIBER:</b> AT&T 823 MURRAY STREET ALEXANDRIA, LA 71301 800-421-4247	
<b>NATURAL GAS:</b> CITY OF ALEXANDRIA 2021 INDUSTRIAL PARK RD. ALEXANDRIA, LA 71303 318-441-6064		<b>CABLE VISION:</b> OPTIMUM 3250 DONAHUE FERRY ROAD PINEVILLE, LA 71360 (318) 640-2892	
<b>LA. DEPARTMENT OF TRANSPORTATION AND DEVELOPMENT</b> DISTRICT 08 3300 MACARTHUR DRIVE ALEXANDRIA, LA 71301 (318) 561-5100			

EXISTING LEGEND

<ul style="list-style-type: none"> <li>POWER POLE</li> <li>SEWER CLEANOUT</li> <li>SEWER MANHOLE</li> <li>FIRE HYDRANT</li> <li>GUY WIRE</li> <li>SIGN</li> <li>DRAINAGE MANHOLE</li> <li>INLET</li> <li>CURB INLET</li> </ul>	<ul style="list-style-type: none"> <li>① TELEPHONE MANHOLE</li> <li>② TELEPHONE PEDESTAL</li> <li>③ HANDICAP PARKING</li> <li>④ OVERHEAD ELECTRIC</li> <li>⑤ OVERHEAD TELEPHONE</li> <li>⑥ UNDERGROUND TELEPHONE</li> <li>⑦ TBM</li> <li>⑧ WATER METER</li> <li>⑨ WATER VALVE</li> <li>⑩ GAS METER</li> <li>⑪ GAS VALVE</li> <li>⑫ ELECTRICAL SERVICE BOX</li> <li>⑬ PECAN TREE</li> <li>⑭ SHRUB</li> </ul>	<ul style="list-style-type: none"> <li>⑮ CREPE MYRTLE</li> <li>⑯ TREE STUMP</li> <li>⑰ 75.38 SPOT ELEVATION</li> <li>⑱ ASPHALT (UNLESS OTHERWISE NOTED)</li> <li>⑲ CONCRETE</li> <li>⑳ COMMUNICATIONS BOX</li> <li>㉑ PLANTER BOX</li> <li>㉒ PROPERTY MAIN RIGHT OF WAY</li> <li>㉓ PROPERTY EXISTING RIGHT OF WAY</li> </ul>
--	---	---



ASHE BROUSSARD I WEINZETTLE ARCHITECTS

TIPTON ASSOCIATES

CONSULTANTS

Monceaux Buller & Associates, LLC  
CABDO Landscape Architecture, LLC  
Fox Neale Engineering, Inc.  
Sales Office  
Mechanical Division  
Associated Design Group, Inc.  
Electrical Division  
Specialty Architect

PROJECT # 19-002-23-01 VBS: F 19032049

CIVIL PROJECT # 2454

SITE ID NEW

DATE OCTOBER 10, 2025

Site CODE: 6-40-023

Ashle Broussard Weinzeite Architects, LLP  
Tipton Associates APC, A Joint Venture  
301 Jackson Street, Suite 205  
Alexandria, LA 71301

NO. REVISION DATE

ADDENDUM NO. 2 12/03/25

ISSUE FOR BID

LOUISIANA STATE UNIVERSITY ALEXANDRIA

DOWNTOWN HEALTH SERVICES CENTER

800 JACKSON ST.  
ALEXANDRIA LA 71301

10-10-25

KEYPLAN

DEMOLITION & SIGNAGE PLAN